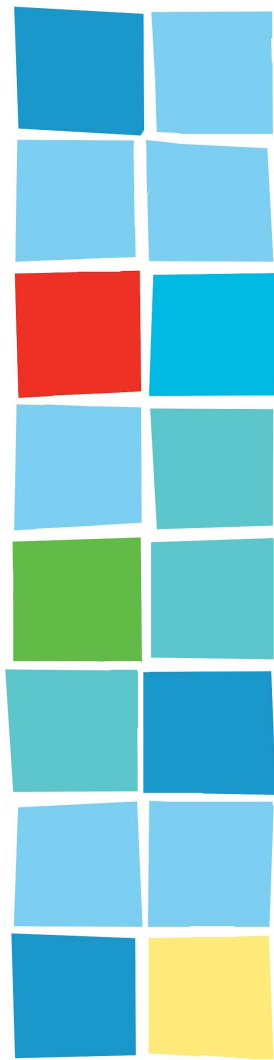


Welcome!

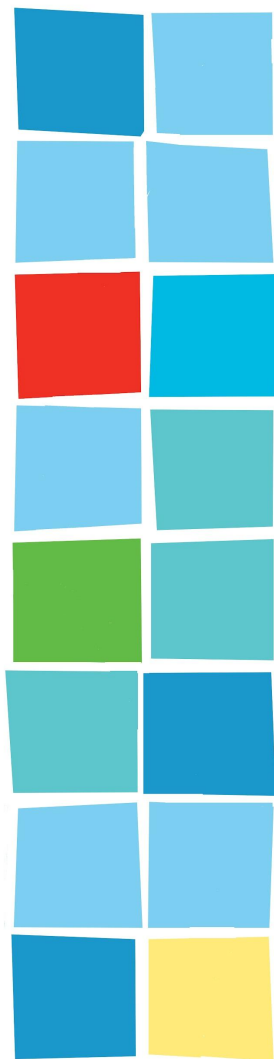
STLMQG Meeting
January 13, 2024

WiFi Password: Nets4all



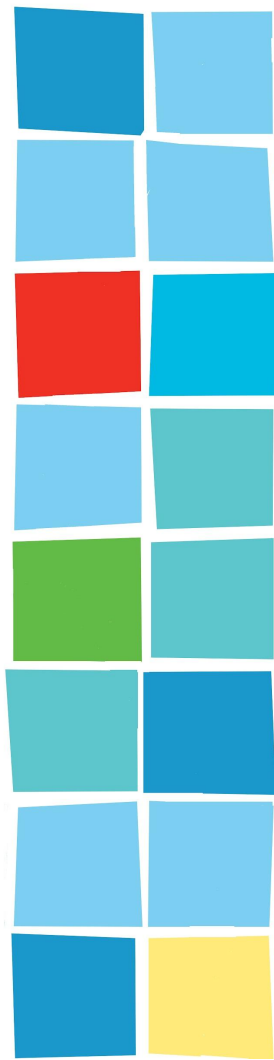
FINANCES

- 12/31/23 account balance: \$20,779.21
- 2024 (1st half) upcoming large expenses:
 - MQG dues - \$2,700
 - Kitty Wilkin - \$1,800
- Financials are posted on the Website under Member Resources/Finances



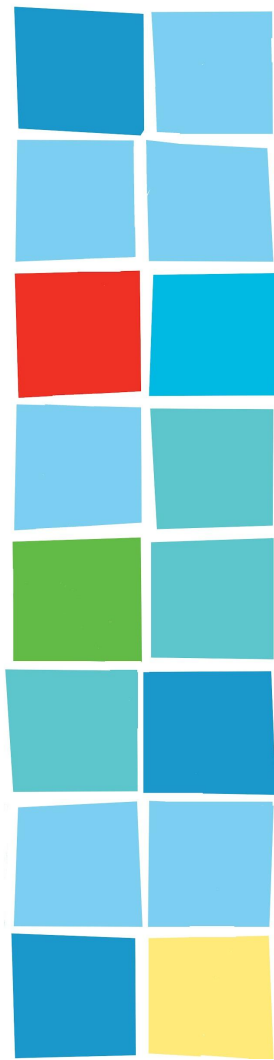
2024 BOARD ELECTIONS

- President: Octavia Pitts
- Web Director: Gail Luther
- Secretary: Abbie Stolzer



2023 SURVEY RESULTS

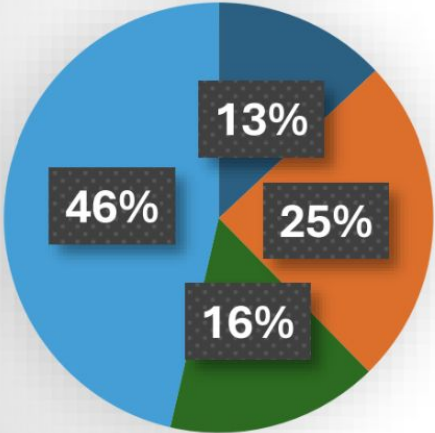
Thank you to all those that completed the survey!



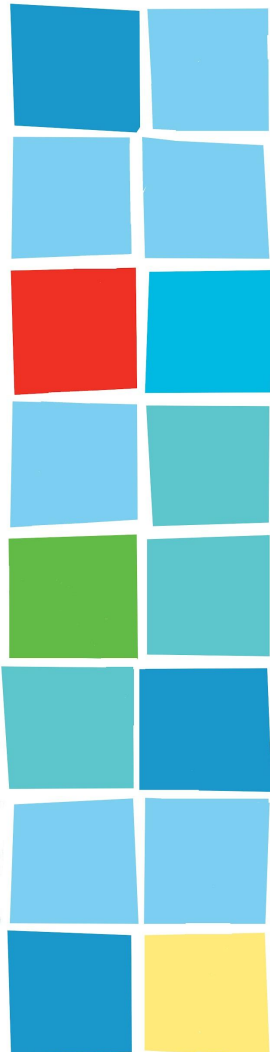
69 TOTAL RESPONDENTS

(31% of membership)

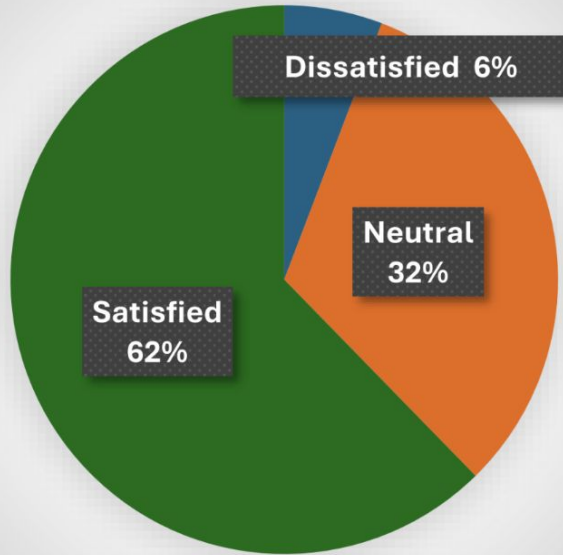
Respondent Demographics



- Less than a year
- 1-3 years
- 3-5 years
- More than 5 years



MEETING LOCATION SATISFACTION



62% of our members were satisfied with our current meeting location.

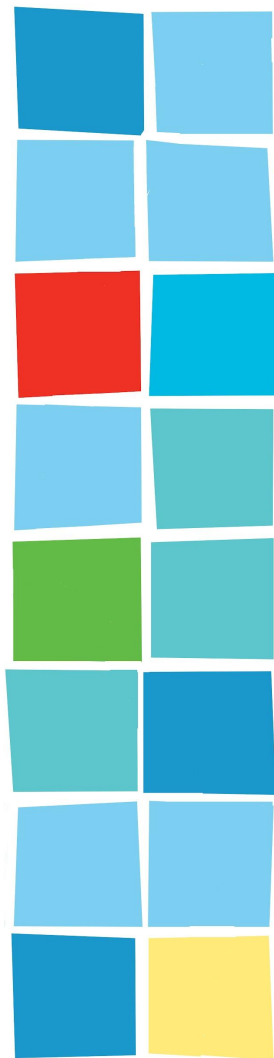
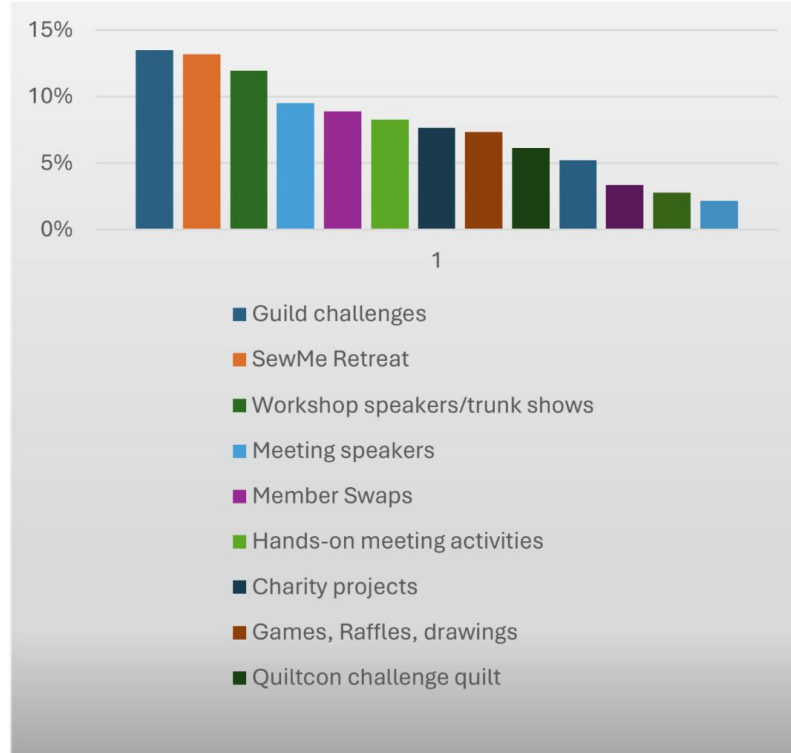
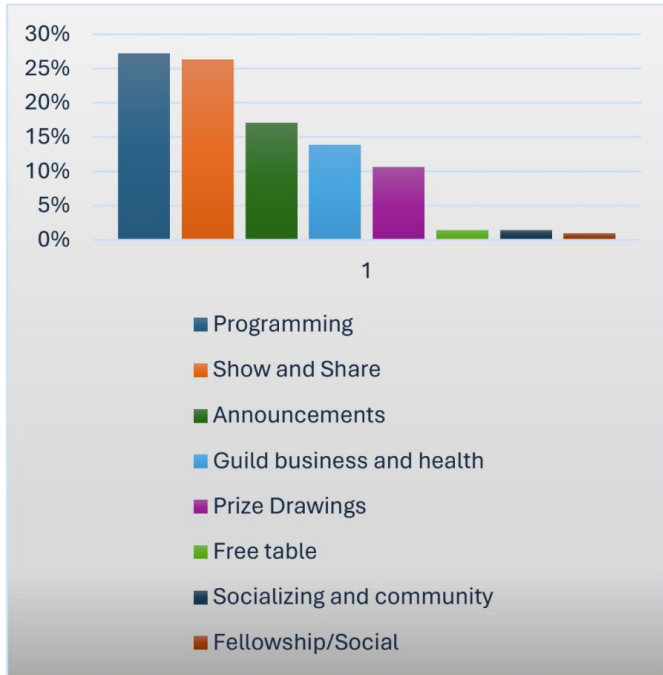
Comments for improvement include:

- **Driving distance**
- **Parking/cars parked on street**
- **Space too small**

***We are looking into alternate locations for 2025**

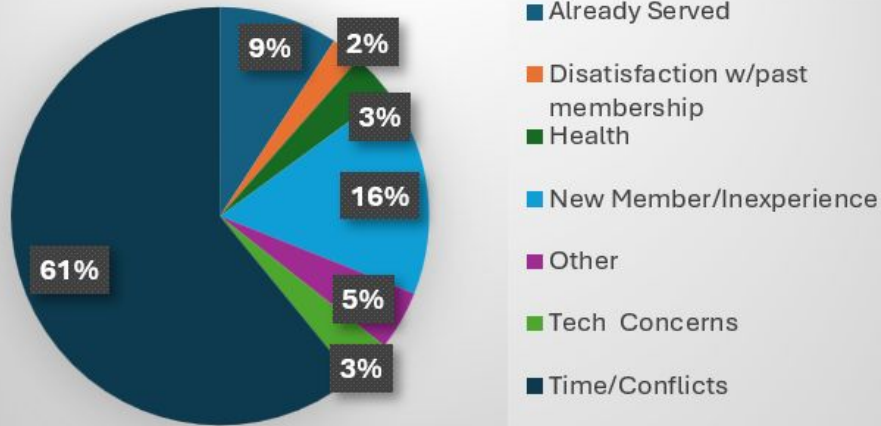


MOST VALUED MEETING & PROGRAMMING ACTIVITIES



COMMITTEE & BOARD MEMBERSHIP

Reasons for not serving



Lack of Time & Other Conflicts were the major reasons for not serving on a committee

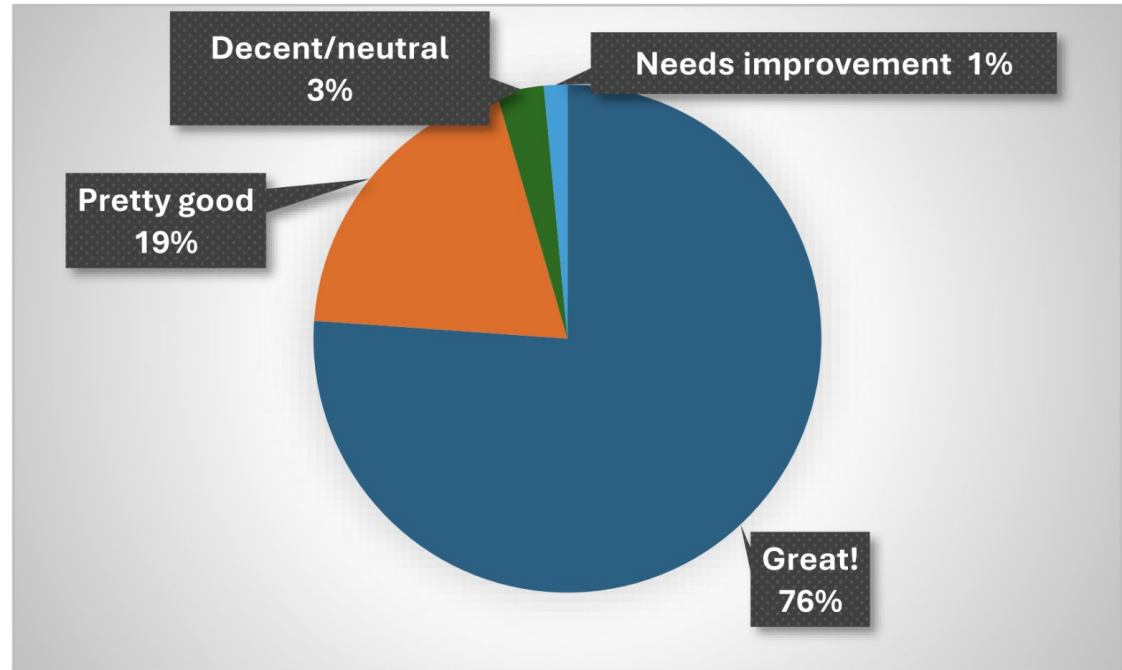
BOARD PERFORMANCE

Items that we did well include:

- Planning & Preparedness
- Meetings & Programming
- Responsive & Welcoming
- Communication & Website

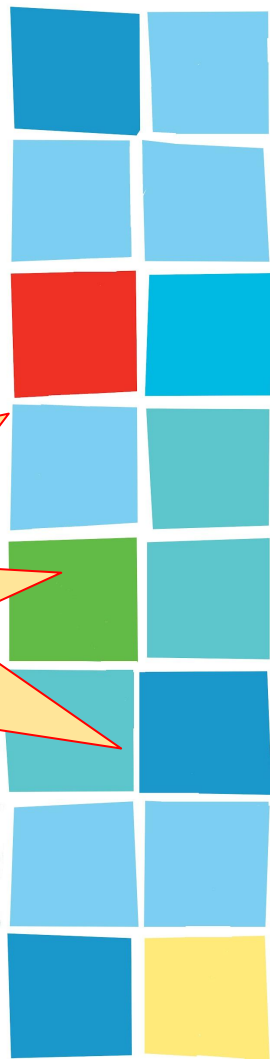
Areas for improvement include:

- Guild Business Overviews
- Meeting Logistics and Flow



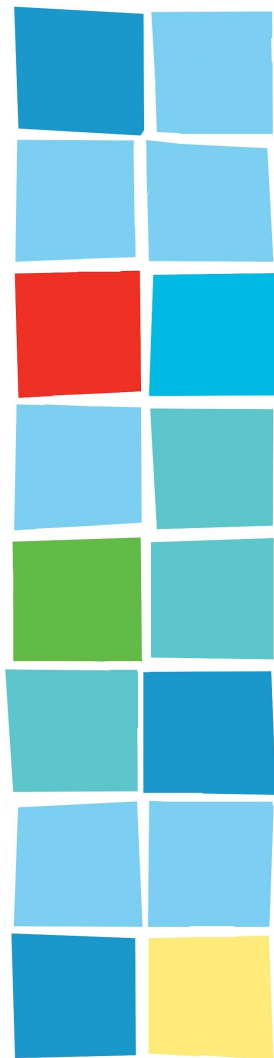
COMMITTEE SIGN-UPS

-  Programming
-  Welcome
-  Swap & Challenge
-  Quiltcon Challenge
-  House
-  Charity
-  Sew Me
-  Quilt Show
-  Social



GUILD BUSINESS

- Donation to classroom:
<https://www.donorschoose.org/project/sew-what-can-we-do-to-help/7928554/>
- Membership renewal
- [Website calendar](#) (dates are also posted [HERE](#))
-
-
-
-



STLMQG UPCOMING EVENTS

■ January 17: Hand Stitchers

Buder Library

■ January 23: Hand Sew Happy Hour

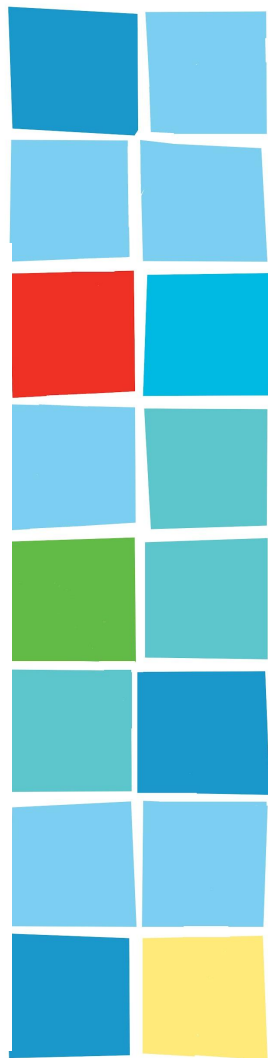
TBD

■ January 27: Virtual Sew

Host: Gail Luther

■ February 7: Hand Stitchers

Buder Library



Thursday
January 25
6:30-8:00pm
on ZOOM

Free for
Members

STLMQG 2024
Speaker Series
with
David Owen Hastings



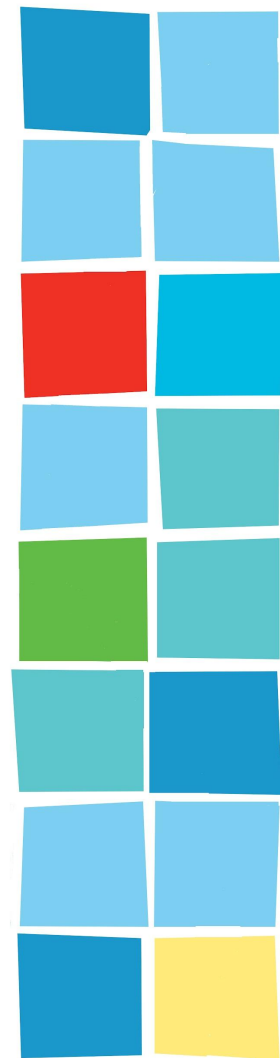
Join us for a virtual lecture with David Owen Hastings as he presents **Minimal Design, Maximum Impact**, which puts an emphasis on simple graphic quilt design. There will be time after the lecture for questions. Further details can be found under the Guild Activities tab at stlmqg.org. Please join us!

Date: January 25

When: 6:30 p.m.

Where: Zoom

Price: Free to current STLMQG members; \$10 for non-members



2024 SAVE THE DATES

- April 12-14: Kitty Wilkin, Night Quilter
In-person Trunk Show & Workshops
- August 16-18: Carolina Oneto
Virtual Trunk Show & Workshops



QUILT-NON

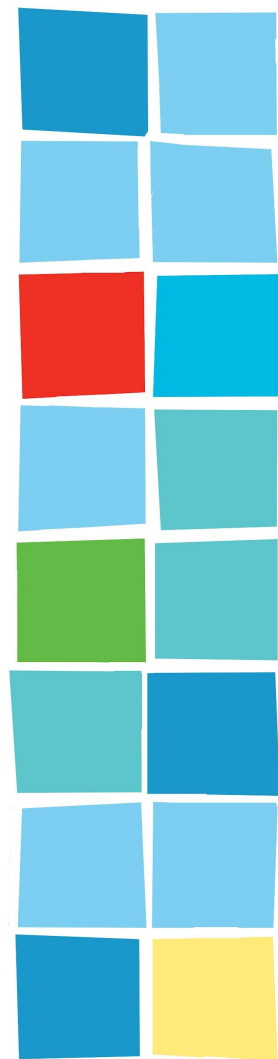


SATURDAY
FEBRUARY 24th

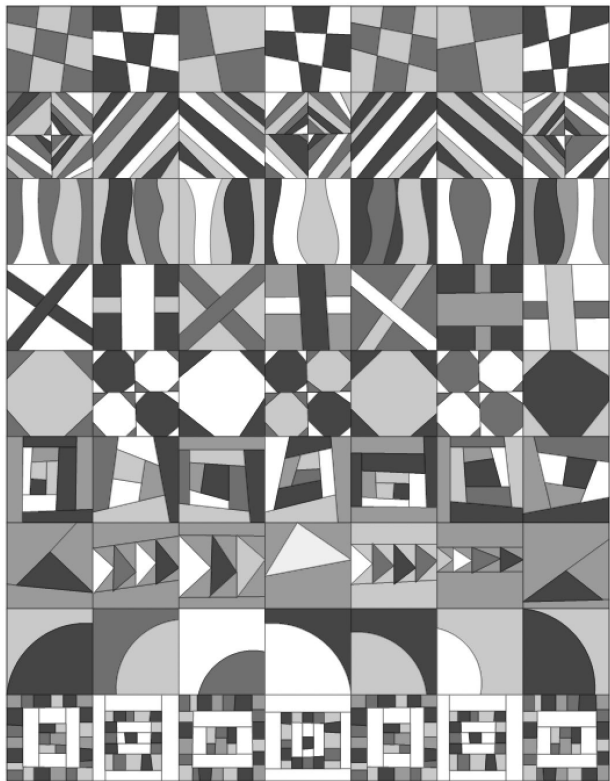
Collecting personal
care items for St.
Vincent DePaul










STLMQG T-SHIRTS

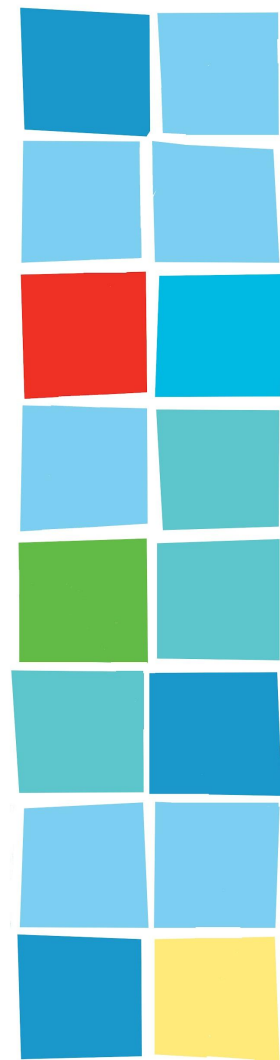
- Taking Orders Now
- STLMQG.ORG - Store
- Order & Pay by:
January 20th

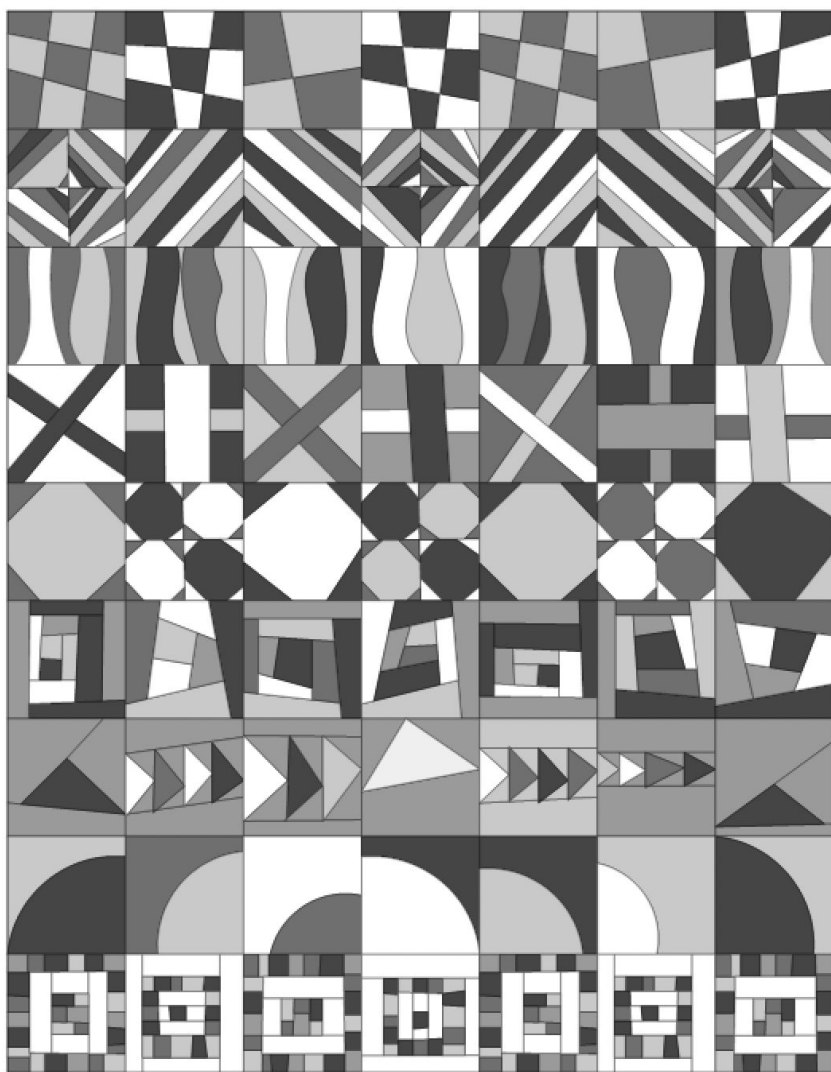


IMPROV BOM SAMPLER

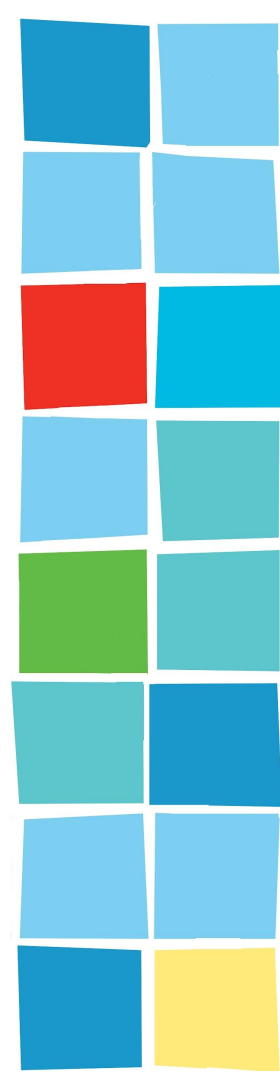


-  4 patch/9 patch/grid
-  Strips
-  Gentle curves
-  X/Plus
-  Snowballs
-  Log cabin/Courthouse steps
-  Flying geese
-  Drunkard's path
-  Medallion/Crumbs/Scraps



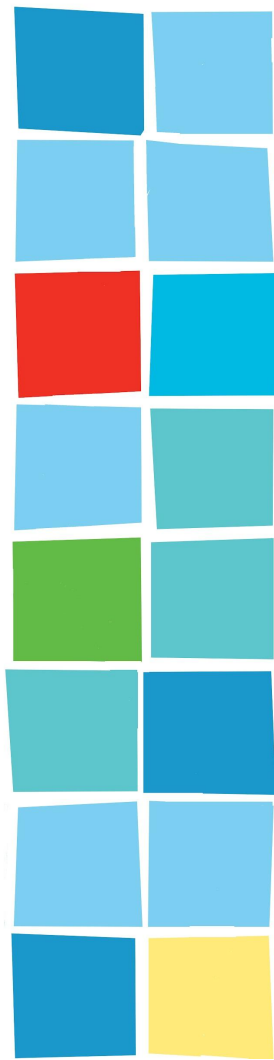


Mock up by
Leila Gardunia



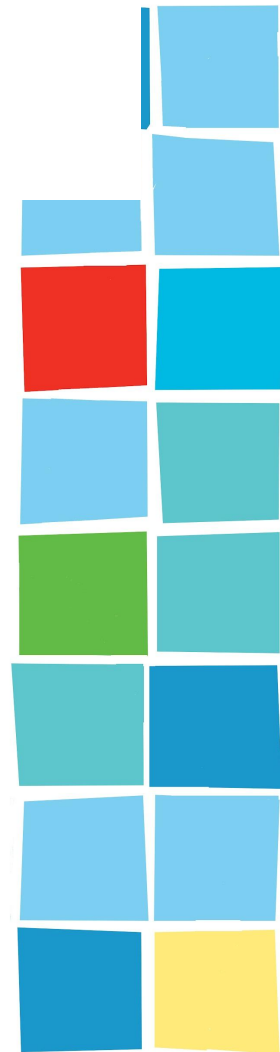
IMPROV BOM SAMPLER

- Begins after February meeting
- Runs each month through October
- Full participation yields a throw size quilt; 56x72"
- 9 ruler free, improv block tutorials
- Submit entries to guild email or use #stlmqgBOM2024 on Instagram
- Monthly random prize drawings
- Grand prize winner drawn at random for completed tops at November meeting



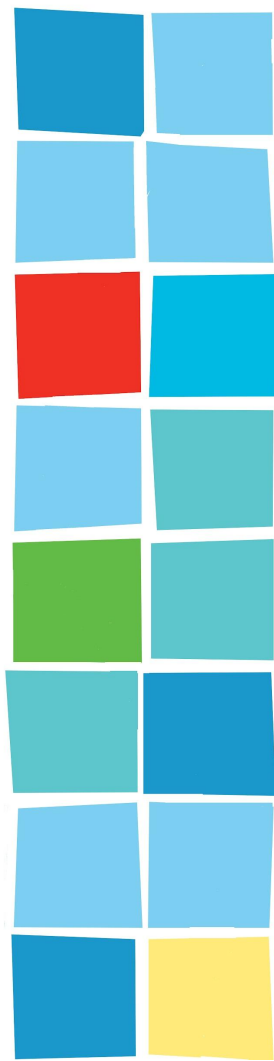
2024 SCRAP BUSTER

- January 13 - July 31, 2024
- Size, Color & Technique: Member's Choice
- Minimum # of different scraps: 50
- Maximum size of scrap: FQ
- Modern Aesthetic: MAXIMALISM
- 1st random drawing: Scrap Pull posted on IG #stlmqgscraps2024 or email to stlmqg@gmail.com by 3/8/24 at 11:59 p.m.
- Full set of rules and suggested resources on the WA Challenge Page
- One Entry per member for drawing



COMMITTEE ANNOUNCEMENTS

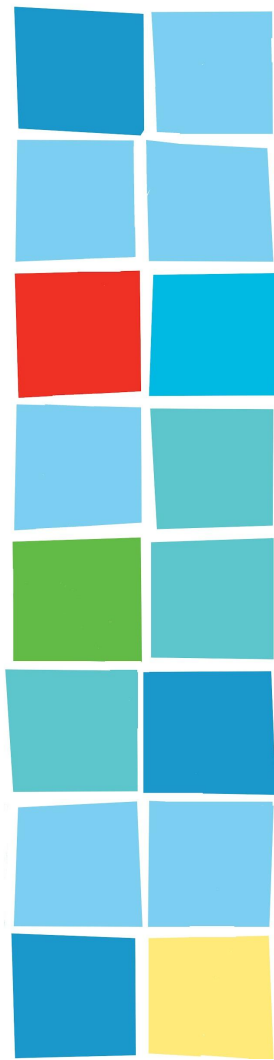
 Quilt Show



QUILT SHOW

Registration is Open!

[Registration Link](#)





STLMQG 2024 Quilt Show Registration Form

Name *

Suzie

First Name

Quiltsalot

Last Name

Email *

SQuilter@gmail.com

example: hi@hapevillemakerspace.com

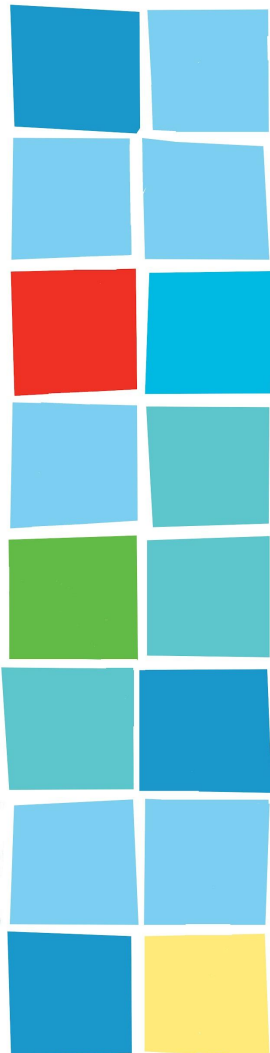
Instagram Username

example: @hapevillemakerspace

Phone Number *

(555) 555-5555

Type in your info



Quilt Entries

For each entry, all fields are required except "Name of Pattern and Pattern Designer" and "For Sale" (only required if applicable).
You may submit up to nine quilts.

Quilt Entry #1

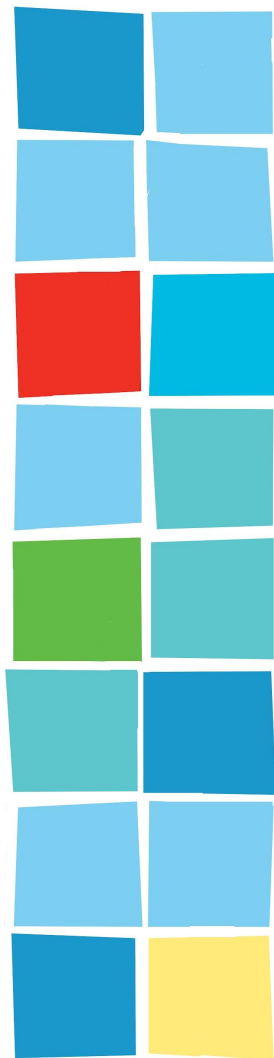
Click here

Quilt Entry #2

Quilt Entry #3

Quilt Entry #4

Quilt Entry #5



Quilt Entry #1

Quilt Name *

Pieced by *

List all sewists who took part in piecing the quilt top. Piecers must be members of the STLMQG.

Quilted by *

List all quilters. Quilter does not have to be a member of the STLMQG.

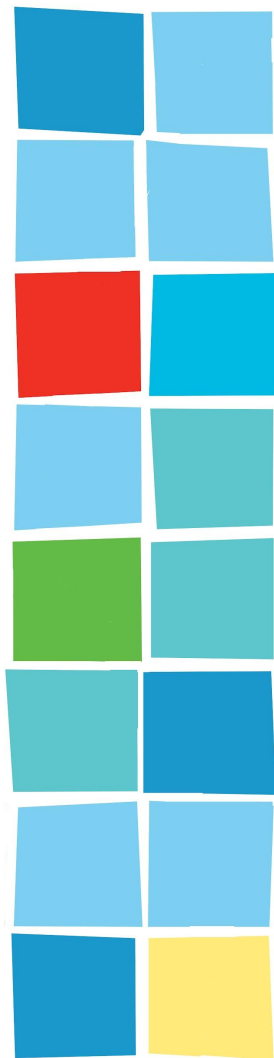
Year Completed *

Name of Pattern and Pattern Designer (if applicable enter "My own Original Design")

Attribution is required if quilt is not your original design.

Dimensions in inches (width x length, e.g. 60 x 70) *

Type in your
quilt's info



How should the quilt be hung? *

Vertically/Portrait (length runs up and down)
Horizontally/Landscape (length runs side to side)

Category *

Art Quilts
Bee Quilts
Applique and Handwork
Improvisation
Minimalist Design
Use of Negative Space
Piecing
Modern Traditionalism
Maximalism
Challenges
Small Quilts

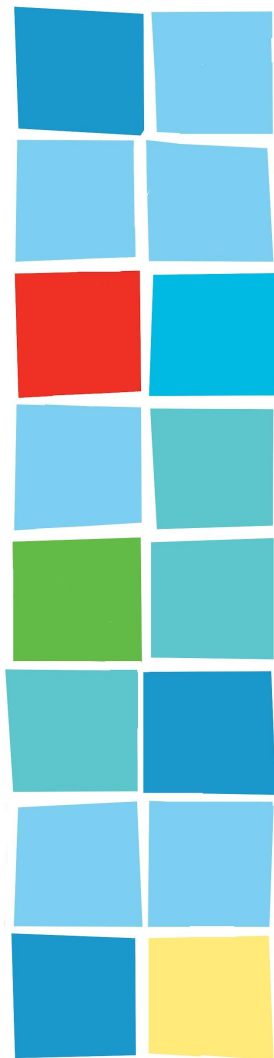
Details can be found here: <https://www.stlmqg.org/Quilt-Show-Members-Resource> (copy and paste link into your browser)

Describe your quilt. (This description will appear on the label next to your quilt. Give credit to the artist or pattern designer, if applicable.) (Limit 100 words) *

Type here...

0/100

Keep typing in
your quilt's info



If you wish to offer your quilt for sale, indicate the price and the contact information (email or phone) you'd like included on the label.

Type here...

You are almost
finished with
quilt #1

Upload image of quilt top (file size must be smaller than 10 GB) *



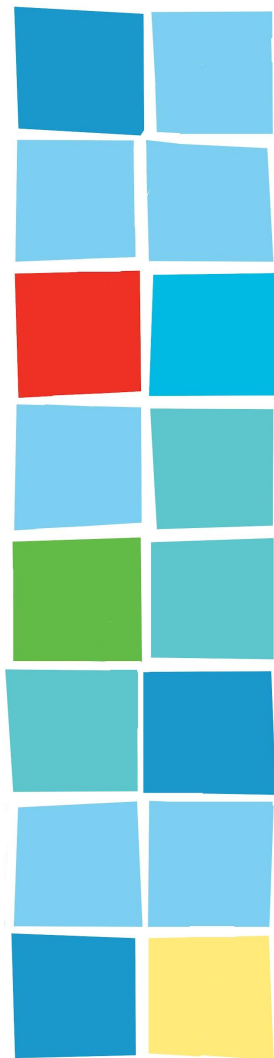
Browse Files

Drag and drop files here

File types: jpg, jpeg, png, gif (minimum: 96dpi)

Quilt Entry #2

Click here when ready to
enter next quilt, and so on,
up to 9 quilts



Agree to Release of Liability



I agree to the following Release of Liability Agreement. *

- I am entering the quilt(s) or quilt-related item(s) described above into the St. Louis Modern Quilt Guild (STLMQG) 2024 Quilt Show with the understanding that the STLMQG will not be providing insurance coverage. The STLMQG 2024 Quilt Show is an event where quilts are displayed indoors in a public park, held liable for damage or loss. I understand that STLMQG members will be responsible for the building opens until it closes. I release my quilt to the STLMQG 2024 Quilt Show and fully understanding the show criteria and conditions. I agree to hold the STLMQG 2024 Quilt Show, St. Louis County Parks, Queeny Park harmless.

Back

Click here to Save

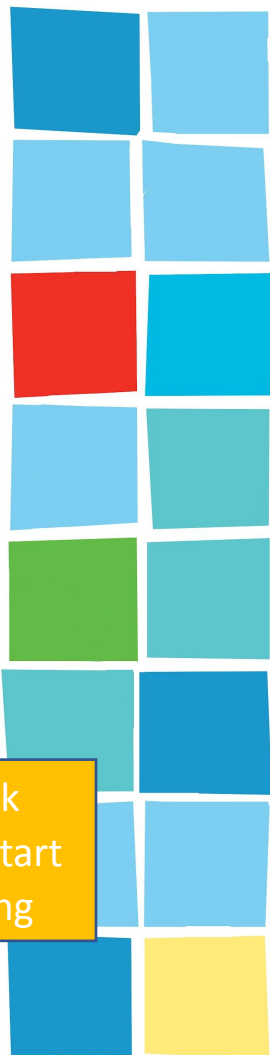
Save

Review Answers

Powered by Jotform

Then click here to start submitting

By Saving, you will receive an email with a link that will take you back into your form to add or update through Jan 31





Review All, Use
Back button if
needed to edit

STLMQG 2024 Quilt Show Registration Form

Name*

Suzie Quiltsalot

Email*

SQuilter@gmail.com

Phone Number*

(555) 555-5555

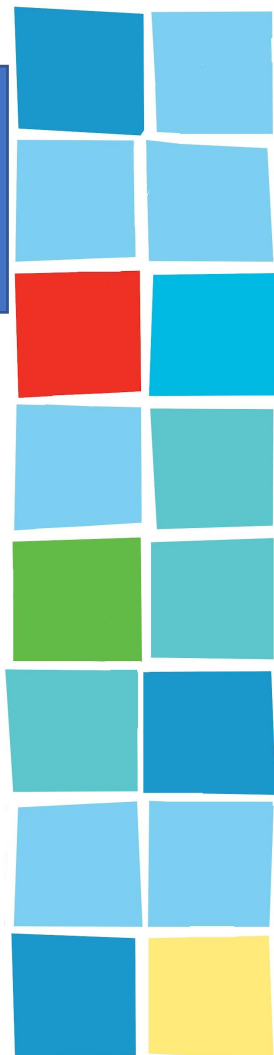
Quilt Entries

For each entry, all fields are required except "Name of Pattern and Pattern Designer" and "For Sale" (only required if applicable). You may submit up to nine quilts.

Quilt Entry #1

Quilt Name*

Suzie's Sunshine



I agree to the following Release of Liability Agreement. *

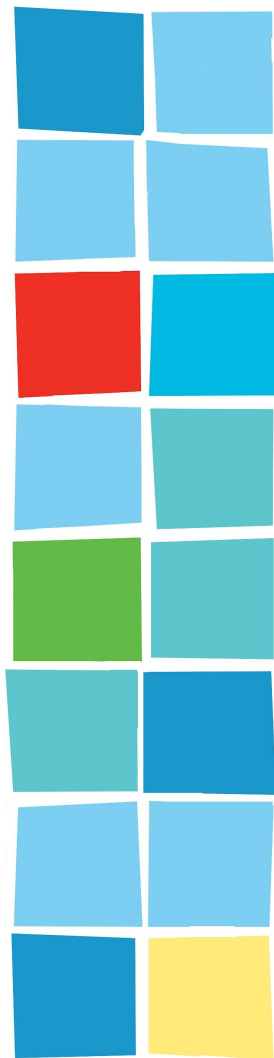
I am entering the quilt(s) or quilt-related item(s) described above into the St. Louis Modern Quilt Guild (STLMQG) 2024 Quilt Show with the understanding that the STLMQG will not be providing insurance coverage. The STLMQG 2024 Quilt Show is an event where quilts are displayed indoors in a gymnasium setting. I understand that the STLMQG will take every precaution to safeguard the quilts while stored prior to and during this event, but neither the STLMQG nor the Saint Louis County Parks, Queeny Park, held liable for damage or loss. I understand that STLMQG members will be present from the time the building opens until it closes. I release my quilt to the STLMQG 2024 Quilt Show having read and fully understanding the show criteria and conditions. I agree to hold the STLMQG and Saint Louis County Parks, Queeny Park harmless.

[Back to Form](#)

Click when ready

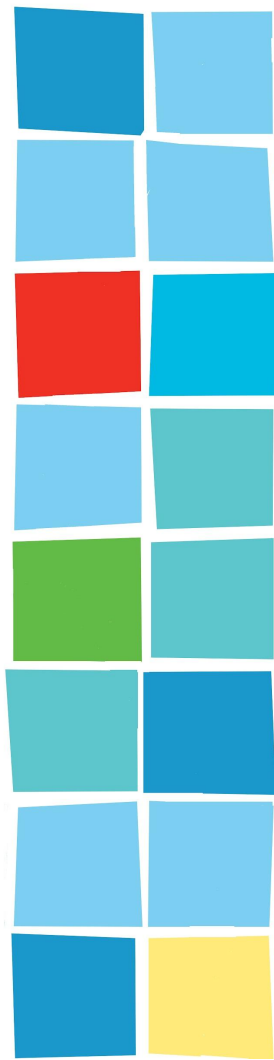
[Submit](#)

Changes can be made
through Jan 31 using
link sent to your email



QUILT SHOW - NEXT STEPS

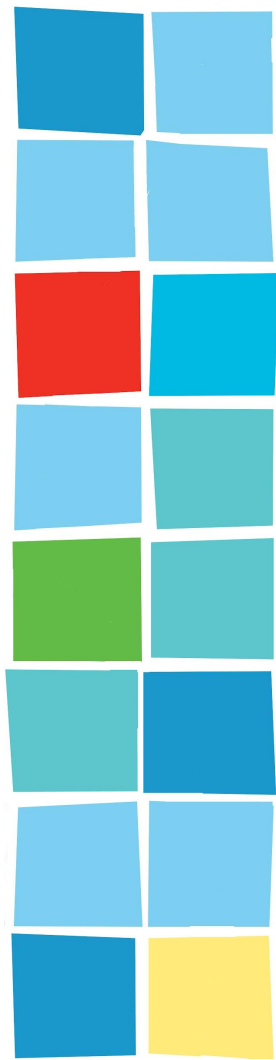
- Jan 31st: Last Day to Register your Quilts
- February: Sign Up To Volunteer at the Show
- February & March Meetings: Drop Off Quilts



AFTER MEETING LUNCH

Today
Cowbron

3248 Laclede Station Rd
Saint Louis, MO 63143

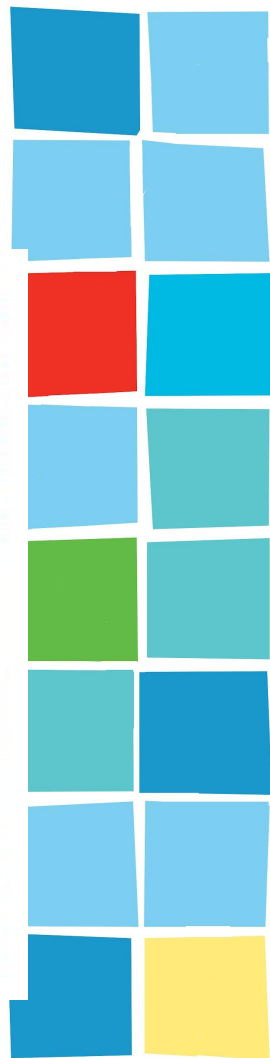


MEMBER ANNOUNCEMENTS

Suzanne Galli Koenen
“Colorplay”

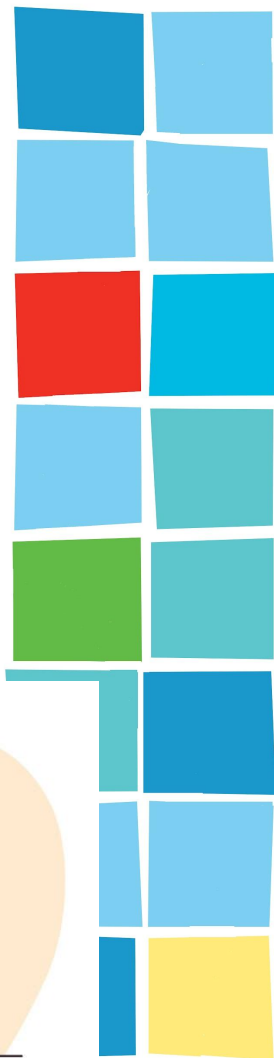
February 2-28, 2024

Webster Groves Public Library
301 E Lockwood Avenue
Webster Groves, MO
63119



MEMBER ANNOUNCEMENTS

- Part of a bigger project?
- Quilting events?
- Know about an Estate sale?



FABRIC RAFFLE

- Modern Makers Bundles
- 2 FQ bundles = 2 winners!
- ONLY ONLINE! Link in Email and QRL Code in the rows
- Open until Noon

Prizes will be shipped this time due to variables beyond our control.

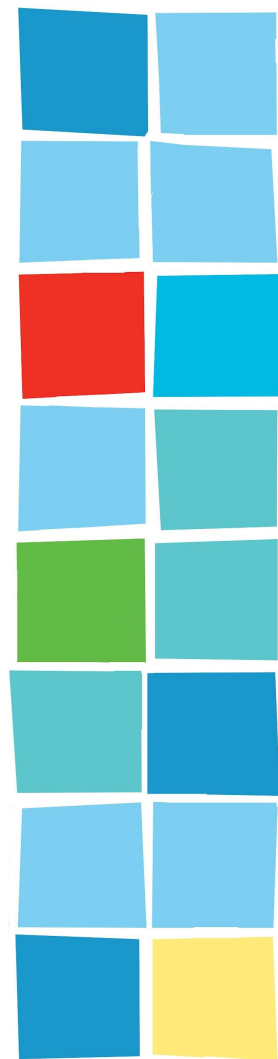


THANK YOU COTTON CUTS!!!

BREAK!



- Check In
- Turn in Ballots
- Pick up Lanyard/committee gift
- Welcome Bags for new members
- Purchase raffle tickets
- Return library books
- Free Table - anything not claimed will be thrown away!
- Say hello to a guest or new member!

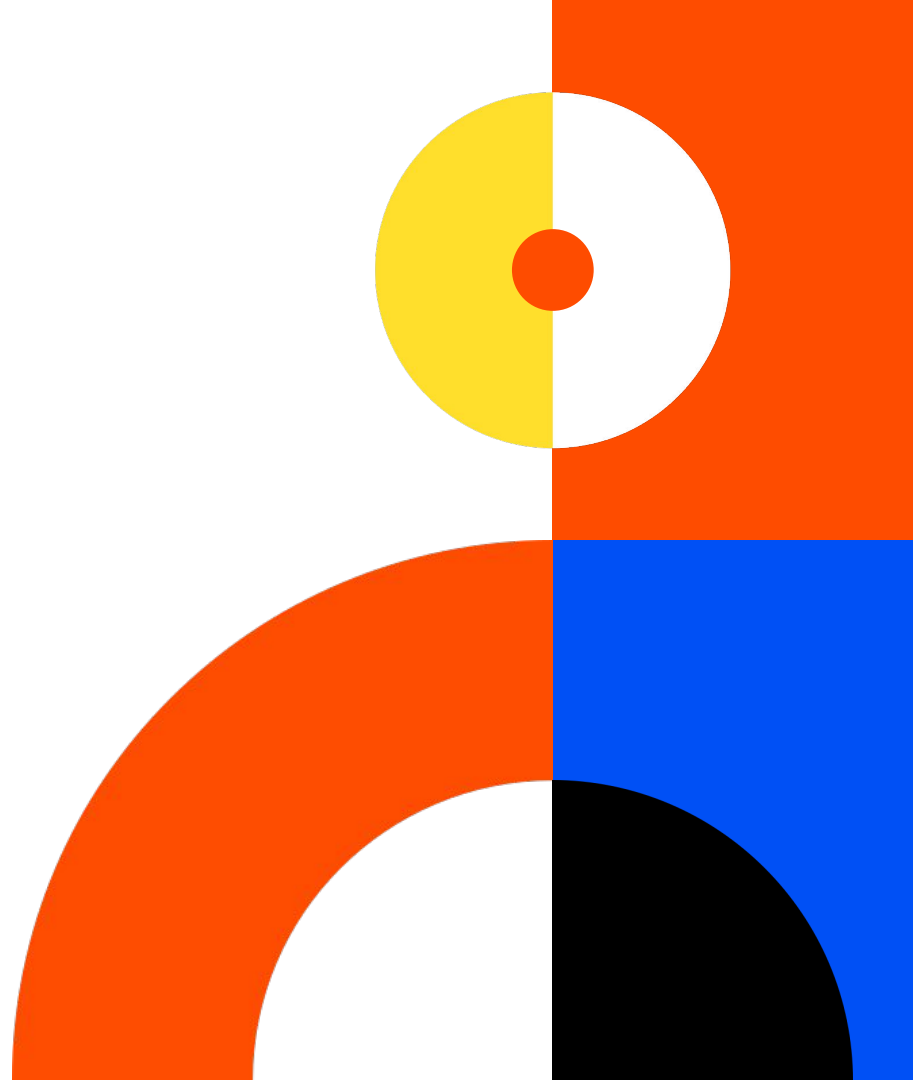


Mac

QUILT PROCESS, STORY, AND TOOLS

Barnes

13 JANUARY 2024



**GRANDMOTHER'S
CHURCH GROUP**



**ETSY
STORE**



Washington University in St. Louis
JAMES MCKELVEY SCHOOL OF ENGINEERING



SAQATM
STUDIO ART QUILT
ASSOCIATES

quilt.
2024



 **Scholastic
Art & Writing
Awards**



North Carolina
School of Science
and Mathematics

**FIRST ART
QUILT
2020**

JUMPING INTO MODERN ART QUILTS

INSPIRED BY

Stories



Mac Barnes

Each quilt in Mac Barnes's A Walk in Their Shoes portfolio measures 33 x 27 inches. The pieces were created in 2021.



H.T. 02/23/2021

by N.K. Quan

There are few experiences in life as tumultuous as high school. It may be a journey of discovery and success,

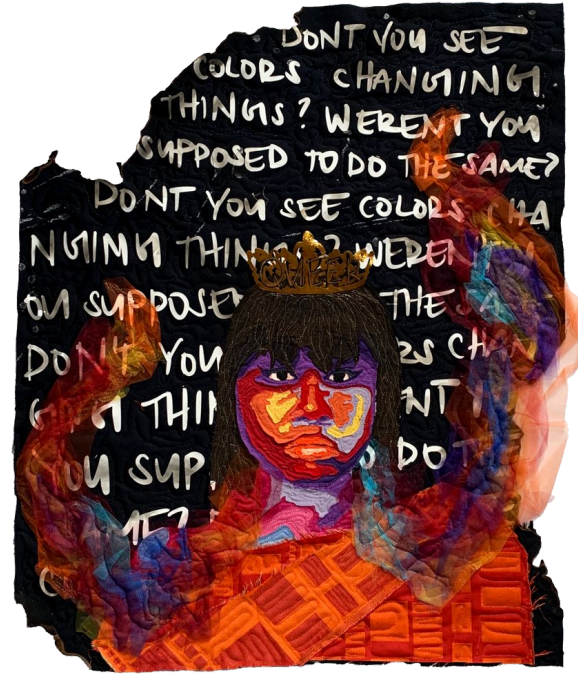
was one of twenty-two students selected for a top honor. The awards program encourages students to build

with domestic assault, sexual abuse, racism, things that beat people down? How do you overcome these things



Purpose-Repurpose

SAQA Regional Exhibitions

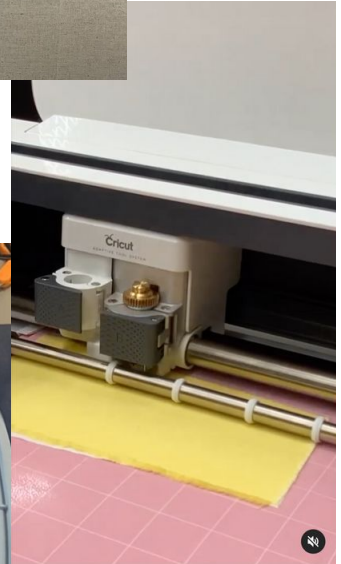
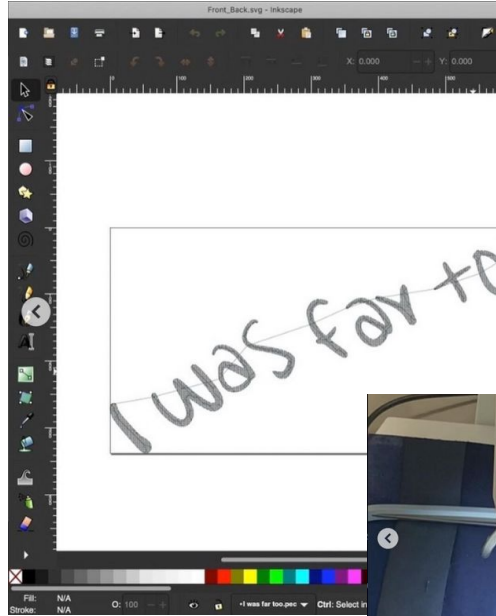
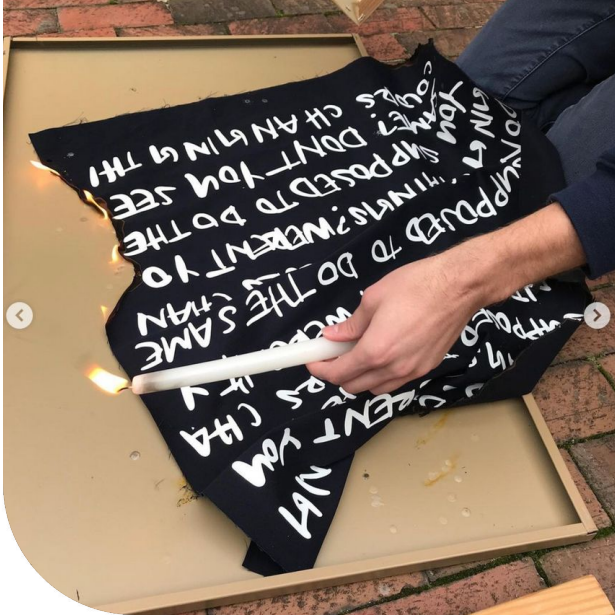


“A WALK IN THEIR SHOES”



“A WALK IN THEIR SHOES”

PROCESS & TOOLS

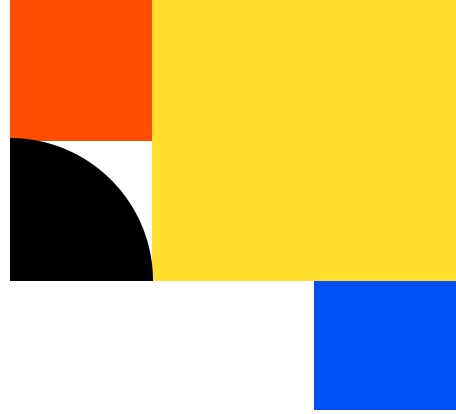


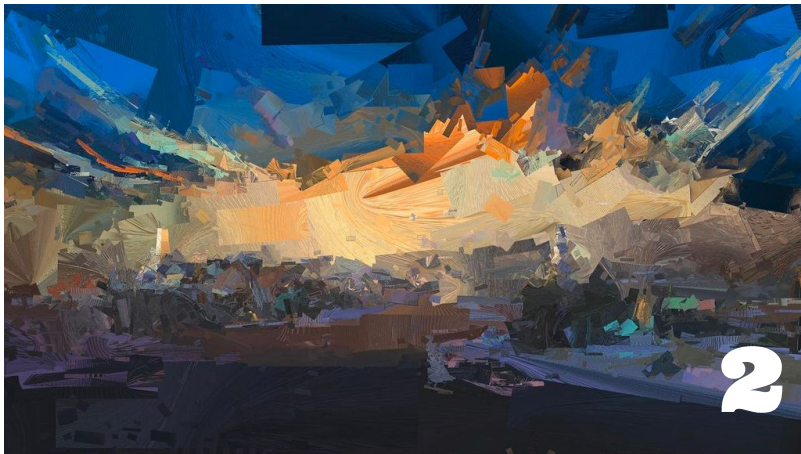


PORTRAIT OF NCSSM
27" X 33"
2022



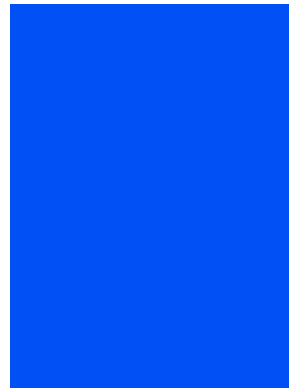
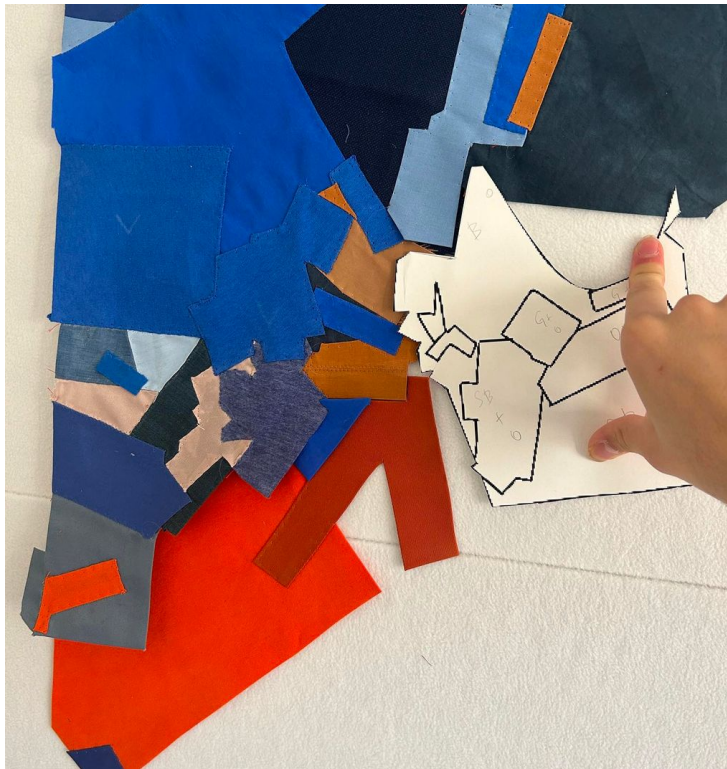
Venturing Outside of The World of Portraits





THE WORLD

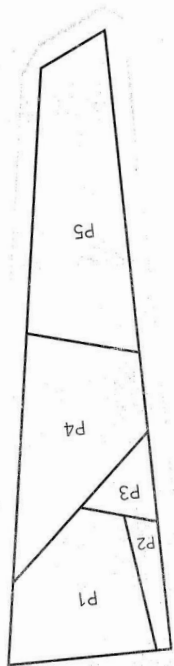
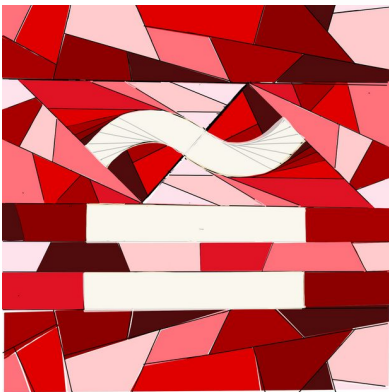




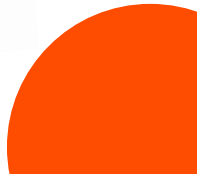
**THE WORLD AGAIN -
PROCESS**

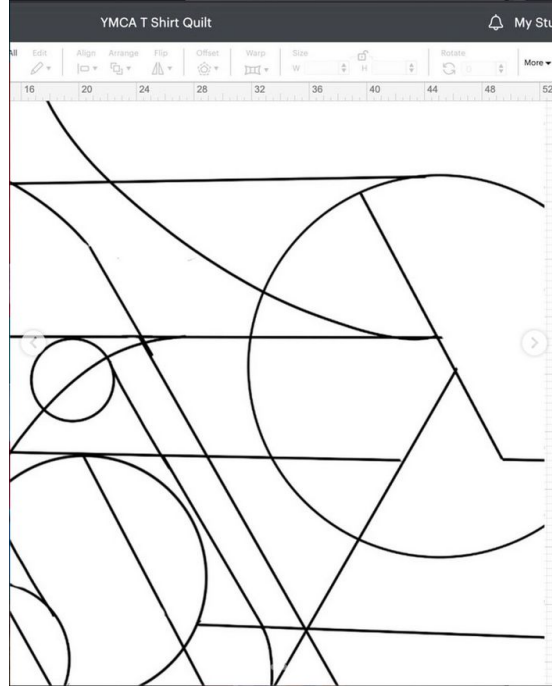
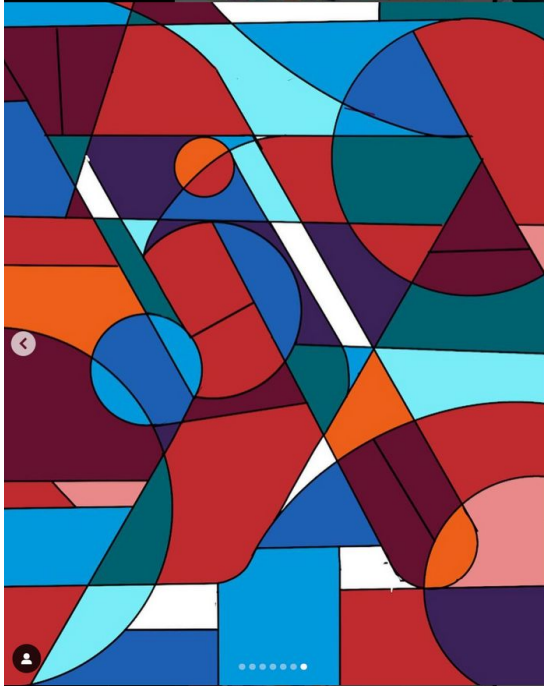


ALMOST EQUAL

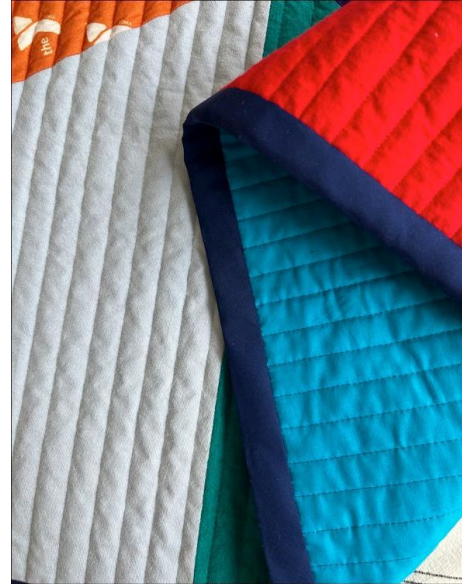



INKSCAPE
Draw Freely.





PELLON 44F



IMPROVISATIONAL

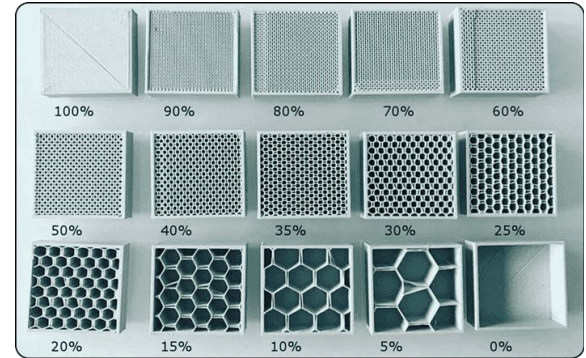


IMPROVISATIONAL

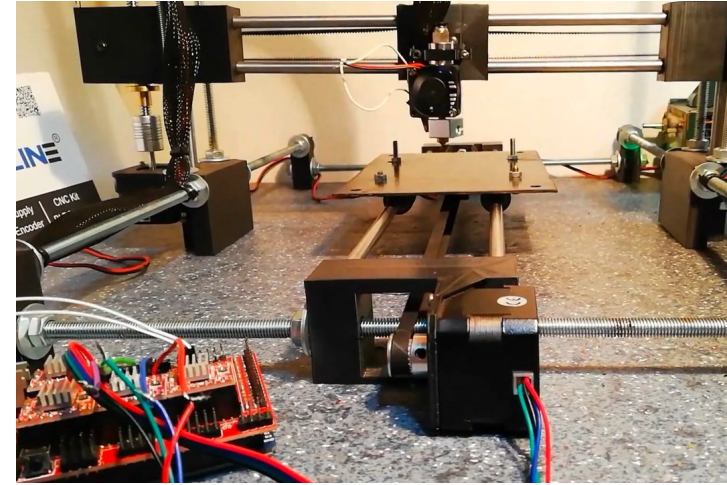




TEXTS I CAN'T SEND - NFC TECHNOLOGY

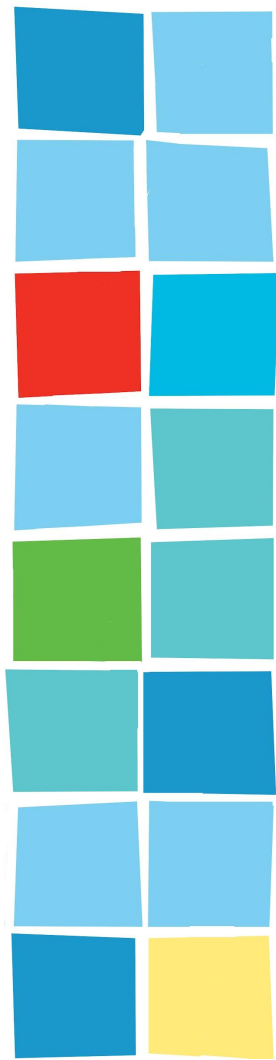


EXPERIMENTS - 3D PRINTED FABRIC (TPU)

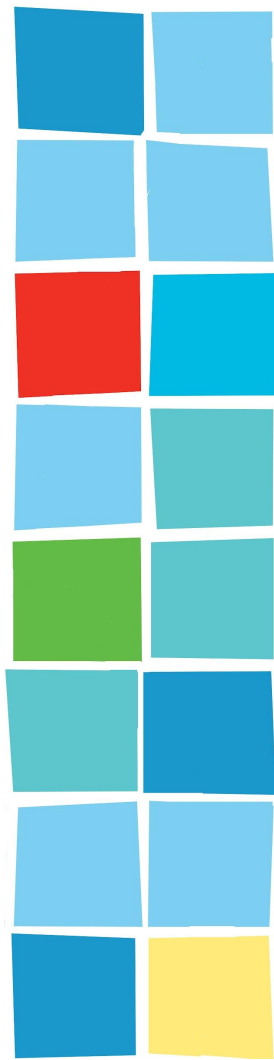


EXPERIMENTS - DIY COMPUTERIZED LONGARM

SHOW AND SHARE!



ATTENDANCE PRIZES!



FABRIC RAFFLE WINNERS...



THANK YOU
COTTON CUTS!

