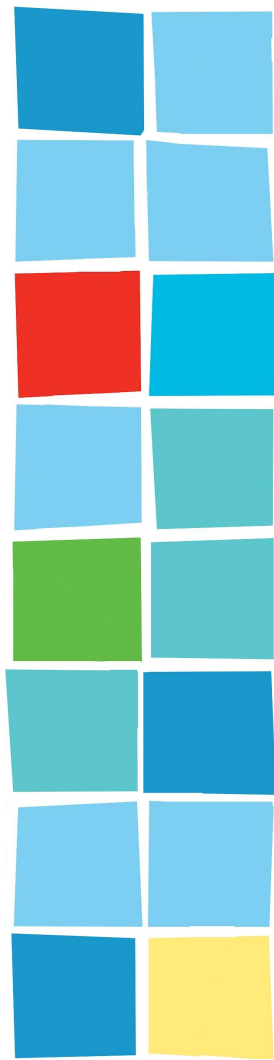


# Welcome!

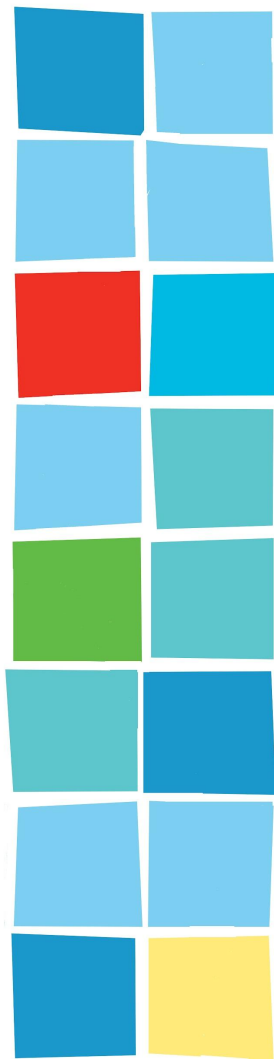
STLMQG Meeting  
March 9, 2024

WiFi Password: Nets4all






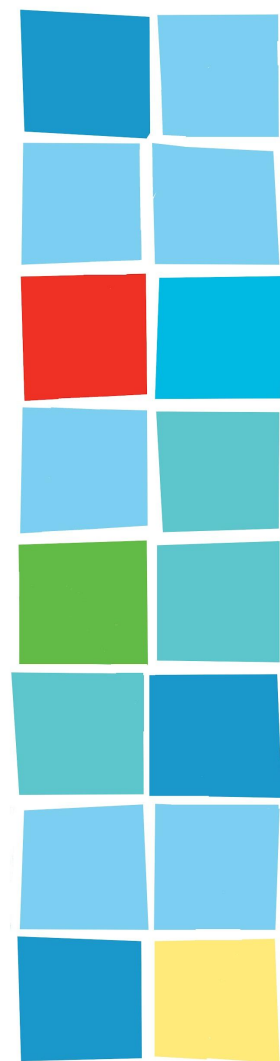
# GUILD BUSINESS

- QuiltCon and QuiltNon
- Let's Get Ready for the Quilt Show!
- April 13 – Meeting Update
- Improv BOM
- Charity committee



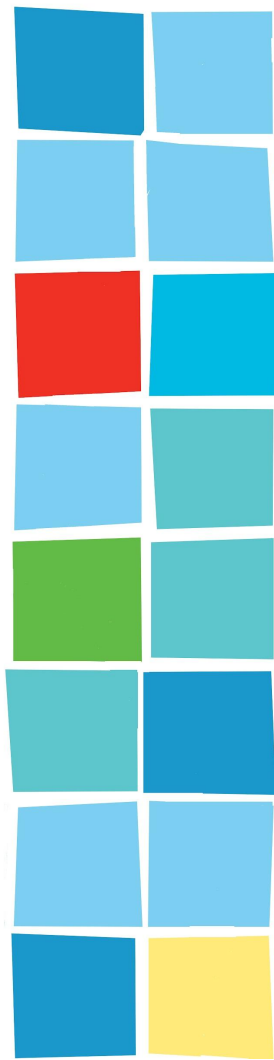
# FINANCES

-  JANUARY 2024 BALANCE - \$19,835.86
-  FEBRUARY 2024 BALANCE - \$15,245.57
-  FINANCIALS POSTED ON THE WEBSITE



# UPCOMING EVENTS

- March 20: Hand Stitchers  
Buder Library
- March 23-24: Quilt Show!!!!
- March 26: Hand Sew Happy Hour  
TBD
- April 3: Hand Stitchers  
Buder Library



# April 13-Virtual Meeting

With guest speaker

**Sarah Ruiz**

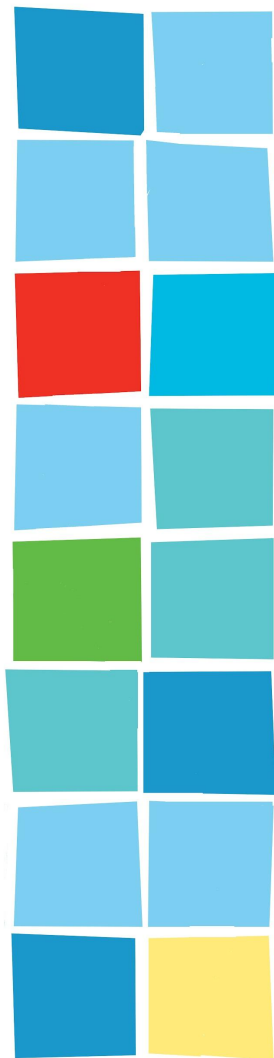
- MQG board rep
- Award winning quilter
- NASA engineer



# 2024 SAVE THE DATES

August 16-18  
Carolina Oneto  
Virtual Trunk Show &  
Workshops

October 4-6  
Sew Me St Louis

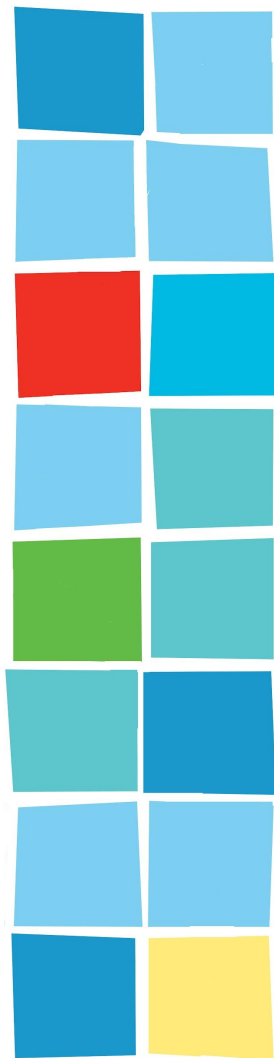


# AFTER MEETING LUNCH MEET-UP

## LLywelyn's Pub

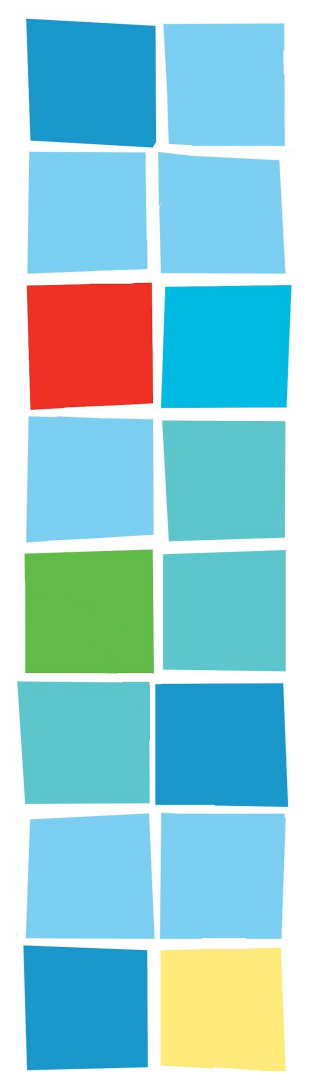
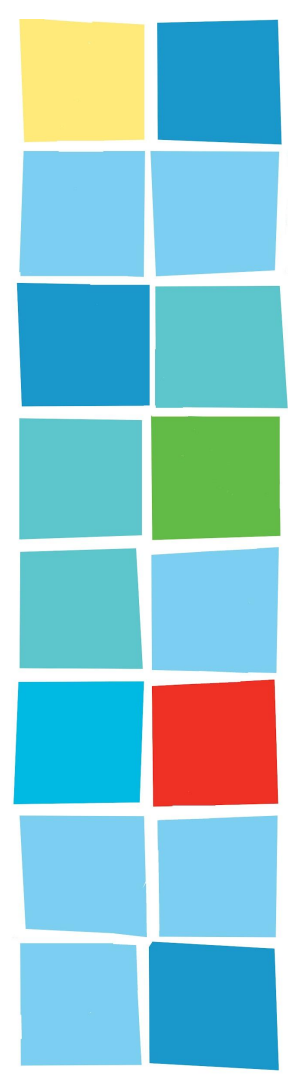
17 Moody Ave

Webster Groves, MO 63119



# COMMITTEE ANNOUNCEMENTS

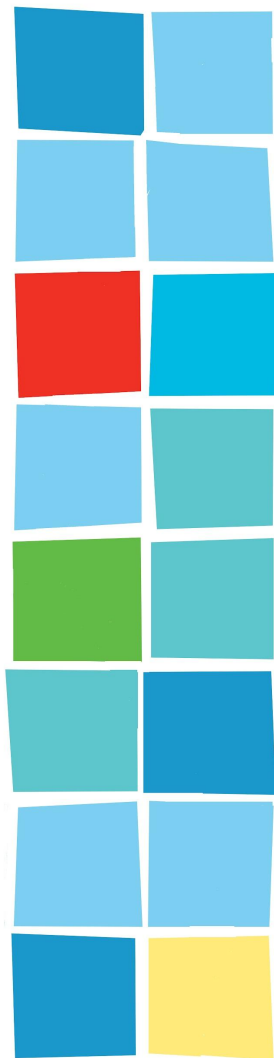
Swap & Challenge  
Quilt Show





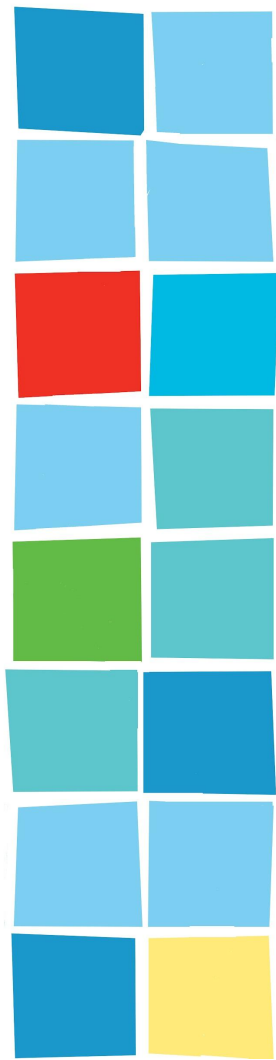
# LUNCH BAG SWAP

- WHEN: March through May
- WHAT: make a lined bag that's no bigger than a brown paper lunch bag
- FABRIC: use the colors of the STLMQG Logo
- PATTERN: member's choice
- CLOSURE: member's choice (snap, velcro, fold-over or drawstring)
- SWAP: at the May meeting (Brown paper bags will be provided to participants at the May meeting)



# STLMQG QUILT SHOW

Quilt turn in area at  
back of room

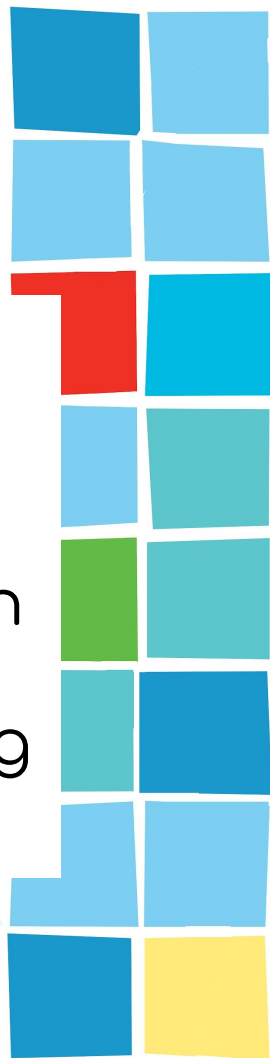


# VENDORS

Accessories by Lynne  
Batting by the Roll  
Bits & Pieces Etc.  
Cindy's Nifty Stitches  
City Sewing Room  
Jackman's Fabrics  
Kimono Designs  
Leila Gardunia

Loops of Gray  
Our Lady's Inn  
O'Sew Personal  
Somerset Quilts  
Suzanne Galli Koenen  
Urban Sewing  
Warm N Cozy Quilting

Included in Publicity sent out 3/1



# PRE-SHOW PREP

Sign up to volunteer

Post to Social Media

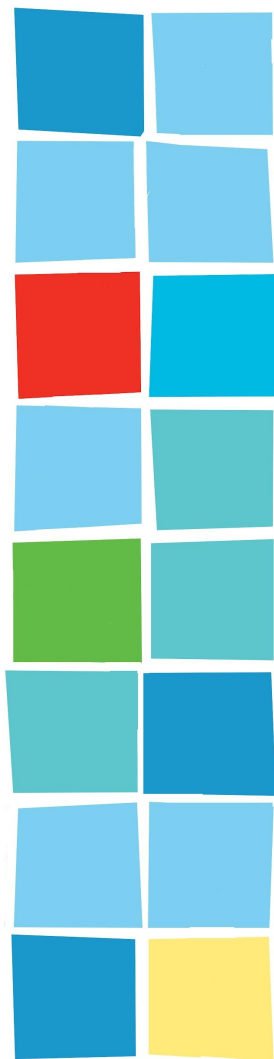
Sign into Wild Apricot app to  
bypass Admissions donation

Walk! Hydrate!



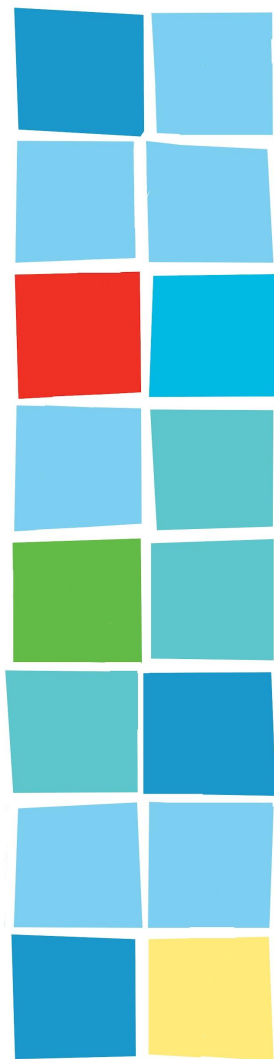
# VOLUNTEERS

- Many people have signed up already. Thank you!!
- Asking each member to sign up for at least 2 shifts
- We need more members for Friday setup
- Setup Friday: shifts available from 10am to 6pm
- Many other areas we could use more help also. If you see a slot that has no volunteers - try to help out there.



# VOLUNTEERS

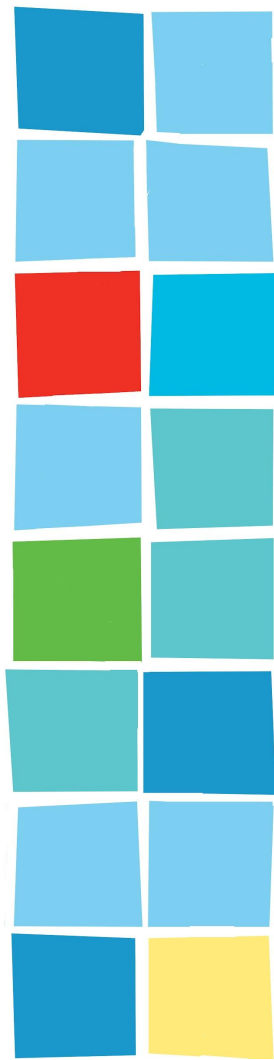
- Please park at back of parking lot during the show
- Go to Guild Booth prior to your shift  
Wear your NAME TAG  
Shifts overlap 15 min
- Wear comfy shoes



# THE SHOW!

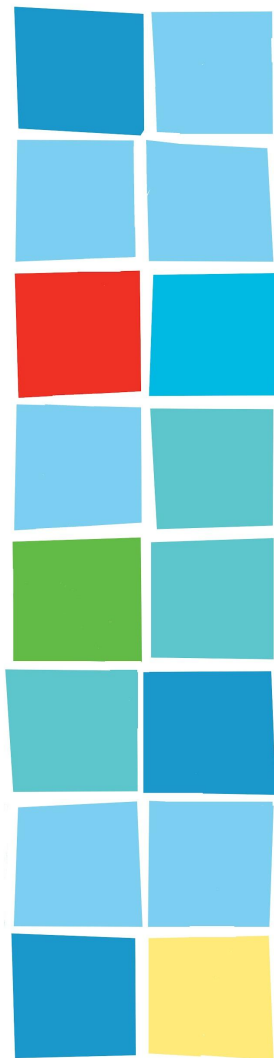
- March 22, 10am-6pm  
Hang quilts, decorate booths, stage and sitting area, helping vendors
- March 23, 9:30am-5:30pm  
Admissions, White Glove Walking, Demos, Shopping
- March 24, 10:30am-6pm  
Admissions, White Glove Walking, Demos, Shopping  
Take down quilts and return to owners  
Raffle quilt winners notified  
Drive home exhausted but confident we hosted a fabulous show

**Greensfelder Recreation Complex at Queeny Park**



# GUILD AREAS

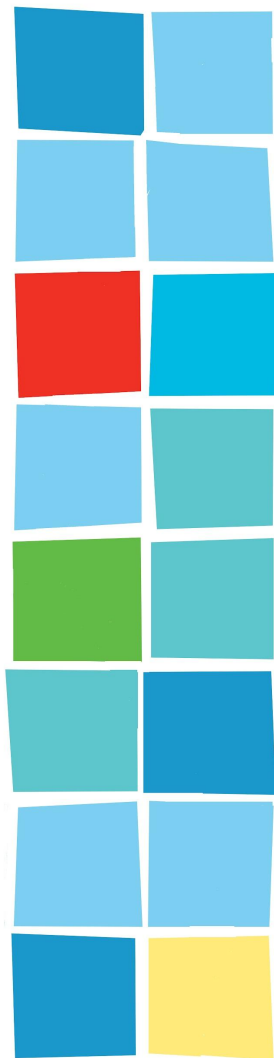
- Admissions
- Raffles
- Guild Booth – Info, Charity, MSQ
- Stage – Demos & Bed Turning





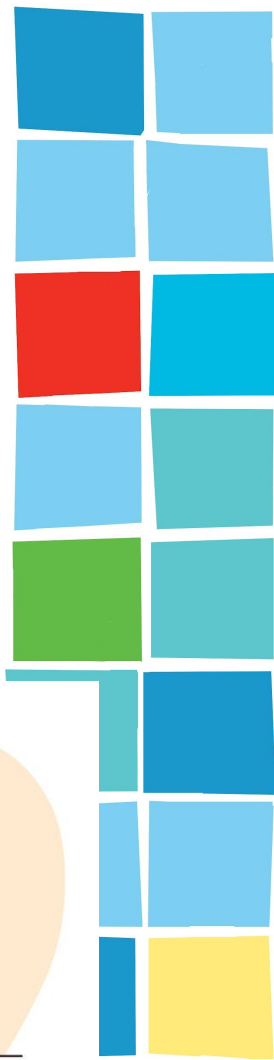
# QUESTIONS?

- Staffing – Amy Kerkemeyer
- Friday Set Up - Annie Cook, Patti Hawkins, Marie Hill
- Demos/Bed Turning – Ann Regal
- Admissions - Tempe Vierck
- Quilt Storage – Pam Hartig
- Layout and Design - Mary Beth Oberlin
- Publicity/Signage - Amanda Zarecki
- Hanging rods – Carol Schmidt, Lynda Drendel
- Printing – Marie Hill
- Vendor concierge – Theresa Grumke, Stephanie Sachtleben
- Registration - Janice Samson
- Supplies - Sarah Sandbothe
- Board Liaison – Jenn Deck
- Show Chair - Robyn Passig



# MEMBER ANNOUNCEMENTS

- Part of a bigger project?
- Quilting events?
- Know about an Estate sale?



# FABRIC RAFFLE

- Chrysanthemum by Alison Glass
- 2 FQ bundles = 2 winners!
- ONLY ONLINE! Link in Email and QRL Code in the rows
- Open until Noon

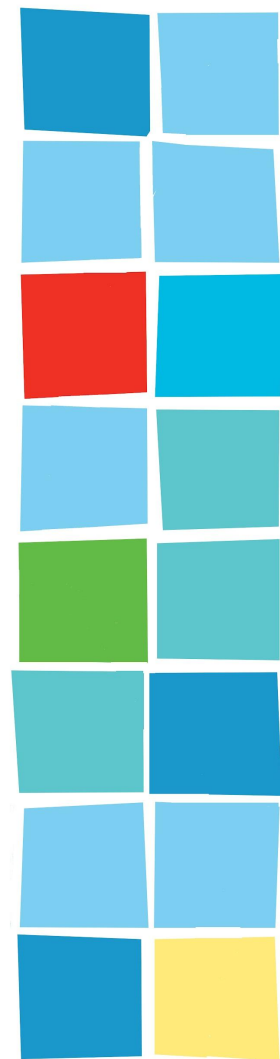


THANK YOU COTTON CUTS!!!

# BREAK!



- Check In
- Volunteer for the Quilt Show
- Pick up t-shirts
- Welcome Bags for new members
- Purchase raffle tickets
- Return library books
- Free Table - anything not claimed will be thrown away!
- Say hello to a guest or new member!



# **Making Traditional Modern Part I**

**March 9, 2024**

**Presented by Susan Muszynski**

# Definition of Modern Traditionalism

Any quilt that has a traditional pattern, block, or design as its foundation reimagined using modern quilting elements.

- Negative Space
- Improv
- Minimalism
- Asymmetry/cropping
- Alternative Grid
- Scale
- Use of color
- Etc.

# WHAT ARE WE LEARNING TODAY?

How selecting, placing, rotating & coloring each component determines the design

- Activity #1 – create your own block using pre-cut blocks
- Activity #2 – coloring using a limited color palette

# COMPONENTS: BLOCKS & SQUARES

Checkerboard

4 – patch

9-patch

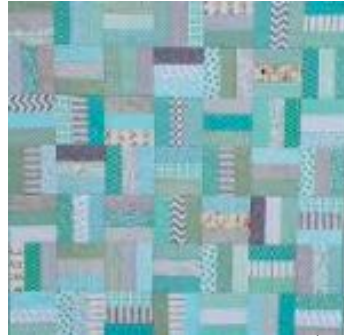
16-patch





# COMPONENTS: RECTANGLES/STRIPES

Basketweave



[Soulsgrowndeeper.org](http://Soulsgrowndeeper.org)



Courthouse steps



[Suzyquilts.com](http://Suzyquilts.com)

# COMPONENTS: TRIANGLES

- Half square
- Hour glass
- $\frac{3}{4}$  Hour Glass
- Flying Geese



Sawtooth Star



Knoxville MQG

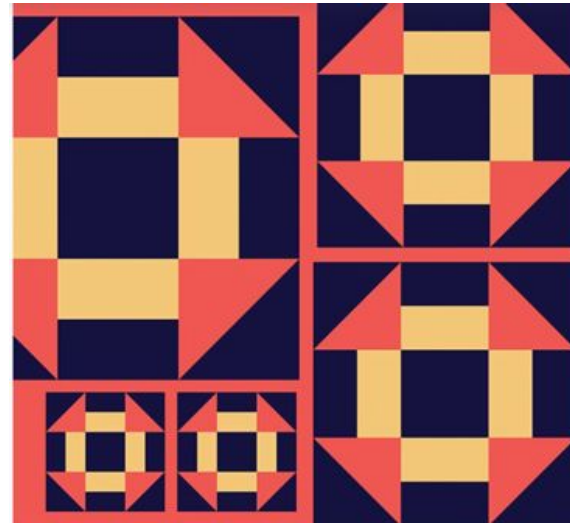
# COMPONENTS: QUARTER CIRCLES



Etsy: at the brightspot

# COMPONENTS: COMBINATIONS

Churn Dash (blocks, triangles, rectangles, squares, strips)



*Traditional Foundation (Churn Dash) + Modern Elements  
(Contrast, negative space) Riane Menardi*

# COMPONENTS: COMBINATIONS

Wagon Wheel (quarter circles, strips, blocks)



Denyse Schmidt Quilts

# ACTIVITY #1: COMPONENTS

10 minutes to take different components  
and make your own blocks

Each person should have:

- 1 sheet of graph paper
- Glue stick

Pre-cut components are on your tables

# COLOR: BRINGING YOUR DESIGN TO LIFE

Use your color wheel to get the maximum contrast

Consider analogous, complementary, etc.

By use of color you can create contrast and negative space



# COLOR: COMPLEMENTARY

Snail Trail (half square triangles, triangles, blocks)



Ebb n Flow, Quilts by Jen



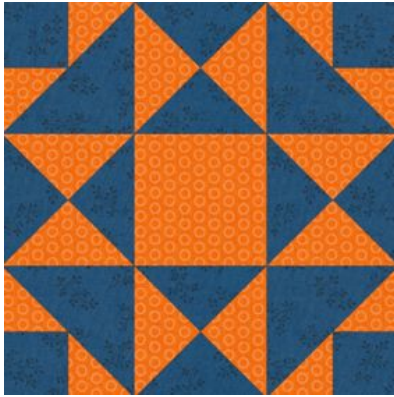
# COLOR: EXAMPLES OF CONTRAST





# COLOR: VALUE

- Lighter colors have lighter values: white is the highest
- Darker colors have darker values: black is the lowest



higher contrast/darker values



Lower contrast/lighter values

# COLOR: FINDING VALUE

- Cell phone (photo set to grayscale)
- 1-Touch Value Finder App (Google Play)
- Values Finder App (Apple)
- Color Evaluator (Amazon)



## **ACTIVITY #2: COLOR**

10 minutes to color a traditional block, using a limited palette (2-4 colors), and make it modern.

Each person should have

- Activity #2 sheet
- 2-4 colors

# MAKING TRADITIONAL MODERN PART II

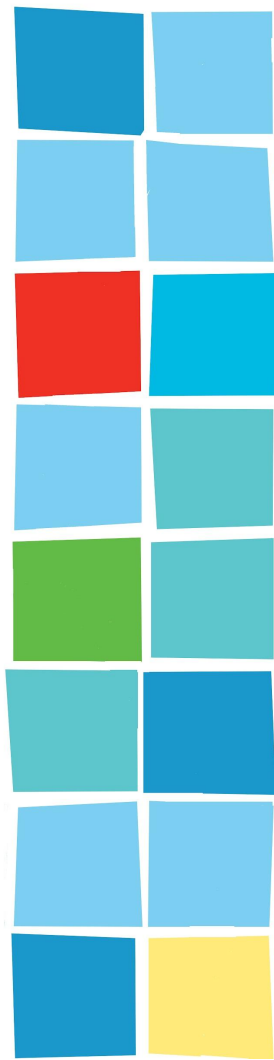
## May 2024

Scale, alternative gridwork,  
maximalism, fracturing etc.

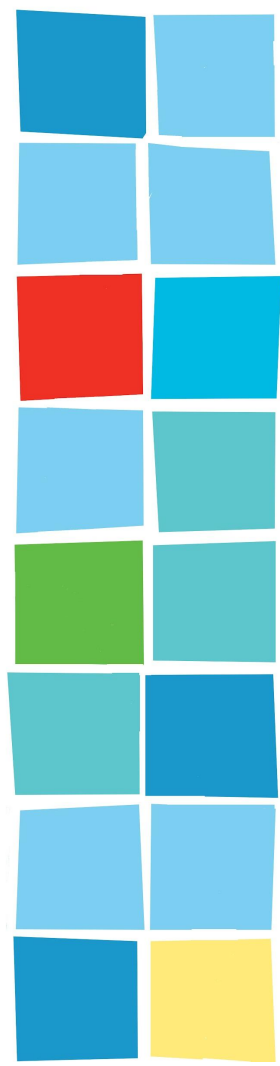
Presented  
by  
Leila Gardunia



# SHOW AND SHARE!



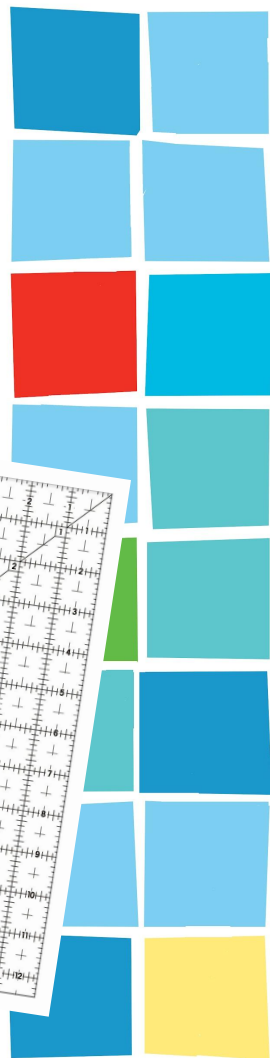
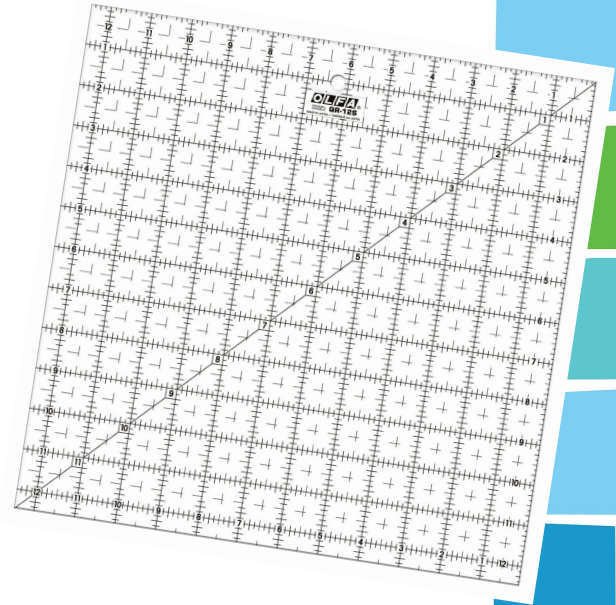
# ATTENDANCE PRIZES!





# Improv BOM Winner

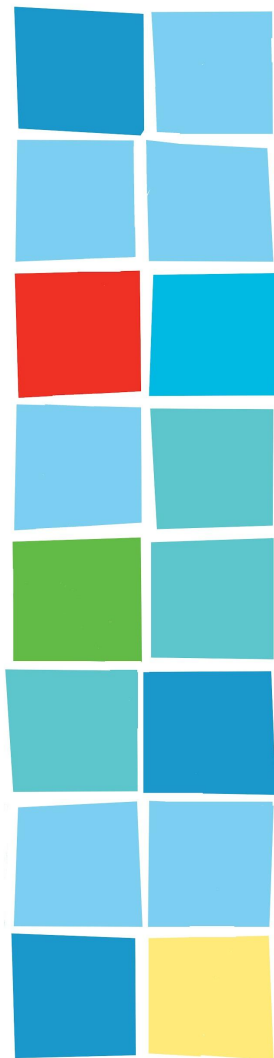
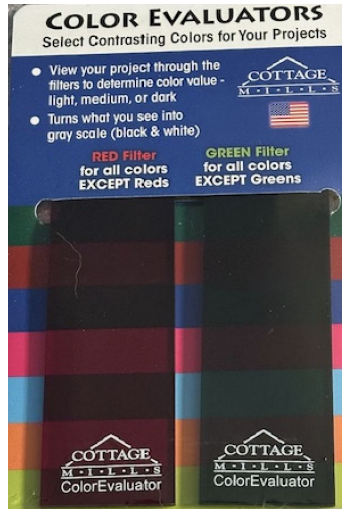
# PAM HARTIG



# SCRAP BUSTERS DRAWING!

and the winner is....

Kerry Caverly



# FABRIC RAFFLE WINNERS...



THANK YOU  
COTTON CUTS!

